



MANHOLE COVERS DIRECT
All Purpose Manhole Design & Fabrication

WE MAKE
THEM **QUICK**

WE MAKE
THEM **CUSTOM**

WE MAKE
THEM **FIT** NEW OR
EXISTING
SPACES

Product Catalogue

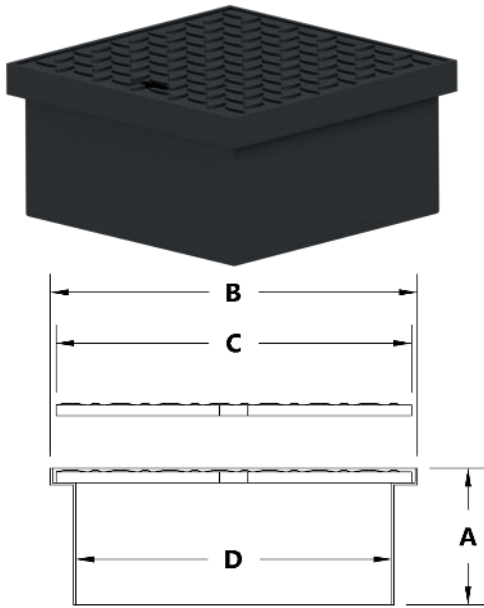
SMALL SQUARE STEEL MANHOLES

ALL PURPOSE ASTM-A36 CARBON STEEL ACCESS MANHOLES DESIGNED TO BE INSTALLED IN CONCRETE APPLICATIONS. ADA COMPLIANT DIAMOND PLATE COVER WITH NON-SKID SURFACE. RATED FOR H-20 SINGLE POINT WHEEL LOADING FOR VEHICLE TRAFFIC UNDER 25MPH. HEAVY DUTY 14 GAUGE FRAME AND SKIRT, ALL WELDED CONSTRUCTION. PAINTED BLACK FINISH. MADE IN THE USA.



LAY IN COVERS

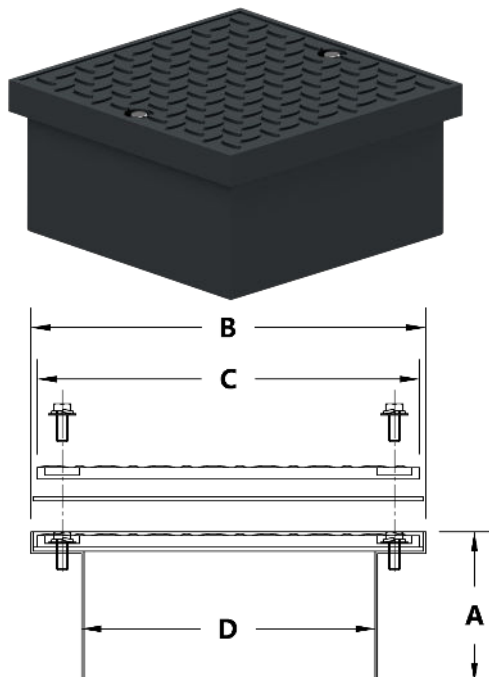
Lay In Style Cover with 1/2" x 1" Pick Hole for Easy Removal



SIZE	MODEL	A	B	C	D
8"	S-8x4-STN	4"	8"	7-5/8"	6-1/4"
	S-8x6-STN	6"			
	S-8x8-STN	8"			
	S-8x12-STN	12"			
	S-8x18-STN	18"			
	S-8x24-STN	24"			
	S-8x36-STN	36"			
12"	S-12x4-STN	4"	12"	11-5/8"	10-1/4"
	S-12x6-STN	6"			
	S-12x8-STN	8"			
	S-12x12-STN	12"			
	S-12x18-STN	18"			
	S-12x24-STN	24"			
	S-12x36-STN	36"			
18"	S-18x4-STN	4"	18"	17-5/8"	16-1/4"
	S-18x6-STN	6"			
	S-18x8-STN	8"			
	S-18x12-STN	12"			
	S-18x18-STN	18"			
	S-18x24-STN	24"			
	S-18x36-STN	36"			

BOLT DOWN COVERS

Bolt Down Style Cover with Gasket and Stainless Steel Hardware



SIZE	MODEL	A	B	C	D
8"	S-8x4-BD	4"	8"	7-1/2"	5"
	S-8x6-BD	6"			
	S-8x8-BD	8"			
	S-8x12-BD	12"			
	S-8x18-BD	18"			
	S-8x24-STN	24"			
	S-8x36-STN	36"			
12"	S-12x4-BD	4"	12"	11-1/2"	9"
	S-12x6-BD	6"			
	S-12x8-BD	8"			
	S-12x12-BD	12"			
	S-12x18-BD	18"			
	S-12x24-BD	24"			
	S-12x36-STN	36"			
18"	S-18x4-BD	4"	18"	17-1/2"	15"
	S-18x6-BD	6"			
	S-18x8-BD	8"			
	S-18x12-BD	12"			
	S-18x18-BD	18"			
	S-18x24-STN	24"			
	S-18x36-STN	36"			

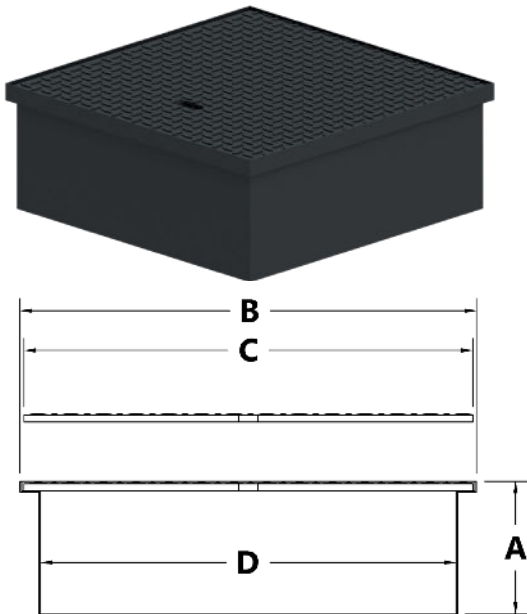
MEDIUM SQUARE STEEL MANHOLES

ALL PURPOSE ASTM-A36 CARBON STEEL ACCESS MANHOLES DESIGNED TO BE INSTALLED IN CONCRETE APPLICATIONS. ADA COMPLIANT DIAMOND PLATE COVER WITH NON-SKID SURFACE. RATED FOR H-20 SINGLE POINT WHEEL LOADING FOR VEHICLE TRAFFIC UNDER 25MPH. HEAVY DUTY 14 GAUGE FRAME AND SKIRT, ALL WELDED CONSTRUCTION. PAINTED BLACK FINISH. MADE IN THE USA.



LAY IN COVERS

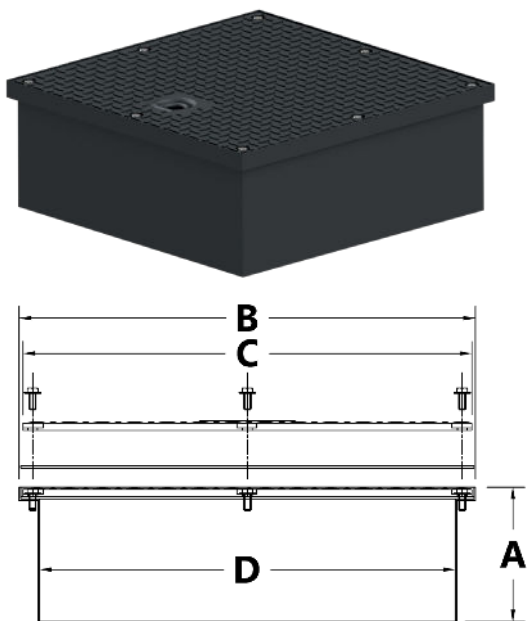
Lay In Style Cover with 1/2" x 1" Pick Hole for Easy Removal



SIZE	MODEL	A	B	C	D
20"	S-20x4-STN	4"	20"	19-5/8"	18-1/4"
	S-20x6-STN	6"			
	S-20x8-STN	8"			
	S-20x12-STN	12"			
	S-20x18-STN	18"			
	S-20x24-STN	24"			
24"	S-20x36-STN	36"	24"	23-5/8"	22-1/4"
	S-24x4-STN	4"			
	S-24x6-STN	6"			
	S-24x8-STN	8"			
	S-24x12-STN	12"			
	S-24x18-STN	18"			
30"	S-24x24-STN	24"	30"	29-5/8"	28-1/4"
	S-24x36-STN	36"			
	S-30x4-STN	4"			
	S-30x6-STN	6"			
	S-30x8-STN	8"			
	S-30x12-STN	12"			
30"	S-30x18-STN	18"	30"	29-5/8"	28-1/4"
	S-30x24-STN	24"			
	S-30x36-STN	36"			

BOLT DOWN COVERS

Bolt Down Style with Gasket and Stainless Steel Hardware, Recessed Pick Eye Handle



SIZE	MODEL	A	B	C	D
20"	S-20x4-BD	4"	20"	19-1/2"	17"
	S-20x6-BD	6"			
	S-20x8-BD	8"			
	S-20x12-BD	12"			
	S-20x18-BD	18"			
	S-20x24-BD	24"			
24"	S-20x36-BD	36"	24"	23-1/2"	21"
	S-24x4-BD	4"			
	S-24x6-BD	6"			
	S-24x8-BD	8"			
	S-24x12-BD	12"			
	S-24x18-BD	18"			
30"	S-24x24-BD	24"	30"	29-1/2"	27"
	S-24x36-BD	36"			
	S-30x4-BD	4"			
	S-30x6-BD	6"			
	S-30x8-BD	8"			
	S-30x12-BD	12"			
30"	S-30x18-BD	18"	30"	29-1/2"	27"
	S-30x24-BD	24"			
	S-30x36-BD	36"			

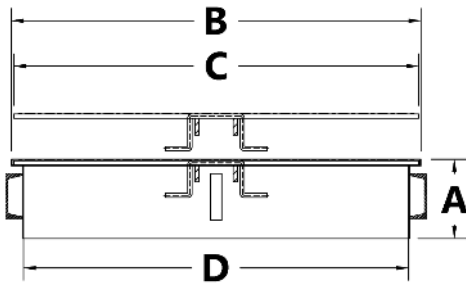
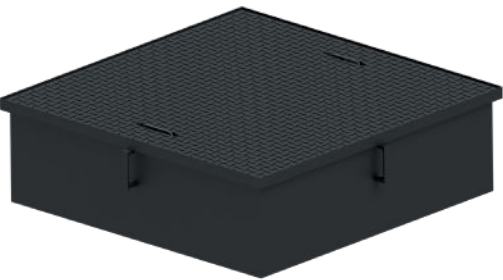
LARGE SQUARE STEEL MANHOLES

ALL PURPOSE ASTM-A36 CARBON STEEL ACCESS MANHOLES DESIGNED TO BE INSTALLED IN CONCRETE APPLICATIONS. ADA COMPLIANT DIAMOND PLATE COVER WITH NON-SKID SURFACE. RATED FOR H-20 SINGLE POINT WHEEL LOADING FOR VEHICLE TRAFFIC UNDER 25MPH. HEAVY DUTY 11 GAUGE FRAME AND SKIRT, ALL WELDED CONSTRUCTION. PAINTED BLACK FINISH. MADE IN THE USA.



LAY IN COVERS

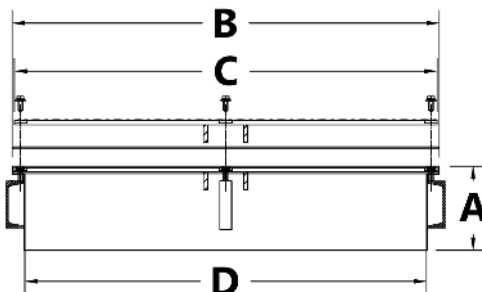
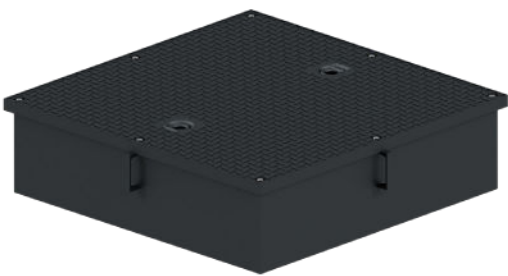
Lay In Style with Round Bar Handles, Concrete Anchors



SIZE	MODEL	A	B	C	D
32"	S-32x4-STN	4"	32"	31-1/2"	29"
	S-32x6-STN	6"			
	S-32x8-STN	8"			
	S-32x12-STN	12"			
	S-32x18-STN	18"			
	S-32x24-STN	24"			
36"	S-32x36-STN	36"	36"	35-1/2"	33"
	S-36x4-STN	4"			
	S-36x6-STN	6"			
	S-36x8-STN	8"			
	S-36x12-STN	12"			
	S-36x18-STN	18"			
38"	S-36x24-STN	24"	38"	37-1/2"	35"
	S-36x36-STN	36"			
	S-38x4-STN	4"			
	S-38x6-STN	6"			
	S-38x8-STN	8"			
	S-38x12-STN	12"			
38"	S-38x18-STN	18"	38"	37-1/2"	35"
	S-38x24-STN	24"			
	S-38x36-STN	36"			
	S-38x24-STN	36"			

BOLT DOWN COVERS

Bolt Down Style with Gasket, Stainless Steel Hardware, Recessed Pick Eye Handles, Concrete Anchors



SIZE	MODEL	A	B	C	D
32"	S-32x4-BD	4"	32"	31-1/2"	29"
	S-32x6-BD	6"			
	S-32x8-BD	8"			
	S-32x12-BD	12"			
	S-32x18-BD	18"			
	S-32x24-BD	24"			
36"	S-32x36-BD	36"	36"	35-1/2"	33"
	S-36x4-BD	4"			
	S-36x6-BD	6"			
	S-36x8-BD	8"			
	S-36x12-BD	12"			
	S-36x18-BD	18"			
38"	S-36x24-BD	24"	38"	37-1/2"	35"
	S-36x36-BD	36"			
	S-38x4-BD	4"			
	S-38x6-BD	6"			
	S-38x8-BD	8"			
	S-38x12-BD	12"			
38"	S-38x18-BD	18"	38"	37-1/2"	35"
	S-38x24-BD	24"			
	S-38x36-BD	36"			
	S-38x36-BD	36"			

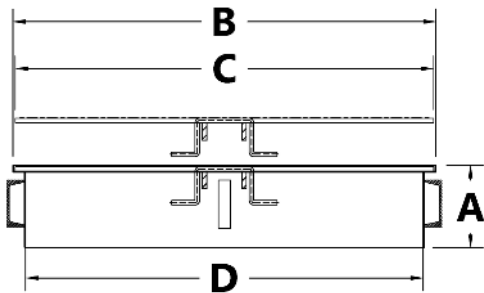
XL SQUARE STEEL MANHOLES

ALL PURPOSE ASTM-A36 CARBON STEEL ACCESS MANHOLES DESIGNED TO BE INSTALLED IN CONCRETE APPLICATIONS. ADA COMPLIANT DIAMOND PLATE COVER WITH NON-SKID SURFACE. RATED FOR H-20 SINGLE POINT WHEEL LOADING FOR VEHICLE TRAFFIC UNDER 25MPH. HEAVY DUTY 11 GAUGE FRAME AND SKIRT, ALL WELDED CONSTRUCTION. PAINTED BLACK FINISH. MADE IN THE USA.



LAY IN COVERS

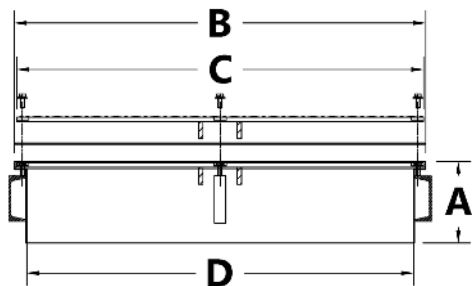
Lay In Style with Round Bar Handles, Concrete Anchors



SIZE	MODEL	A	B	C	D
42"	S-42x4-STN	4"	42"	41-1/2"	39"
	S-42x6-STN	6"			
	S-42x8-STN	8"			
	S-42x12-STN	12"			
	S-42x18-STN	18"			
	S-42x24-STN	24"			
48"	S-42x36-STN	36"	48"	47-1/2"	45"
	S-48x4-STN	4"			
	S-48x6-STN	6"			
	S-48x8-STN	8"			
	S-48x12-STN	12"			
	S-48x18-STN	18"			
60"	S-48x24-STN	24"	60"	59-1/2"	57"
	S-48x36-STN	36"			
	S-60x4-STN	4"			
	S-60x6-STN	6"			
	S-60x8-STN	8"			
	S-60x12-STN	12"			
60"	S-60x18-STN	18"	60"	59-1/2"	57"
	S-60x24-STN	24"			
	S-60x36-STN	36"			

BOLT DOWN COVERS

Bolt Down Style with Gasket, Stainless Steel Hardware, Recessed Pick Eye Handles, Concrete Anchors



SIZE	MODEL	A	B	C	D
42"	S-42x4-BD	4"	42"	41-1/2"	39"
	S-42x6-BD	6"			
	S-42x8-BD	8"			
	S-42x12-BD	12"			
	S-42x18-BD	18"			
	S-42x24-BD	24"			
48"	S-42x36-BD	36"	48"	47-1/2"	45"
	S-48x4-BD	4"			
	S-48x6-BD	6"			
	S-48x8-BD	8"			
	S-48x12-BD	12"			
	S-48x18-BD	18"			
60"	S-48x24-BD	24"	60"	59-1/2"	57"
	S-48x36-BD	36"			
	S-60x4-BD	4"			
	S-60x6-BD	6"			
	S-60x8-BD	8"			
	S-60x12-BD	12"			
60"	S-60x18-BD	18"	60"	59-1/2"	57"
	S-60x24-BD	24"			
	S-60x36-BD	36"			